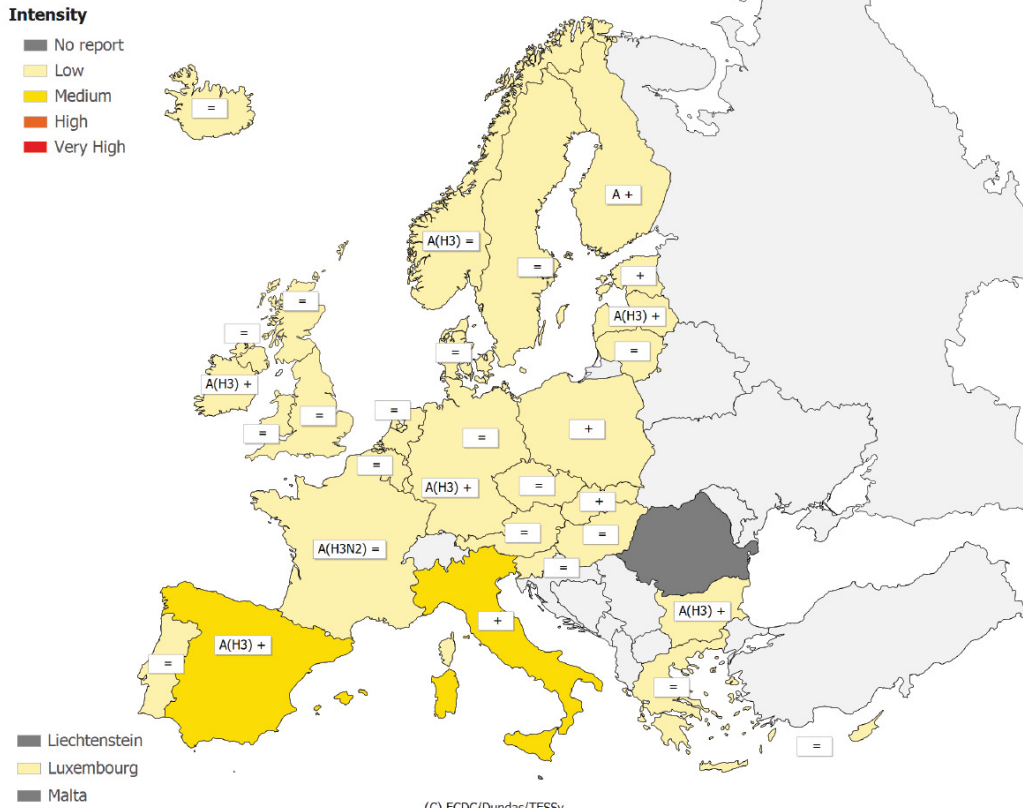


Influensan i Europa

Influensarapporter från Europa (ECDC, 20/1) visar på fortsatt låg aktivitet med lokal eller regional spridning i Norge, Finland, Spanien, Italien och Holland. Bland typade stammar har Influensa A(H3N2) hittills dominerat.

Map 1: Intensity for week 02/2012



* A type/subtype is reported as dominant when at least ten samples have been detected as influenza positive in the country and of those > 40 % are positive for the type/subtype.

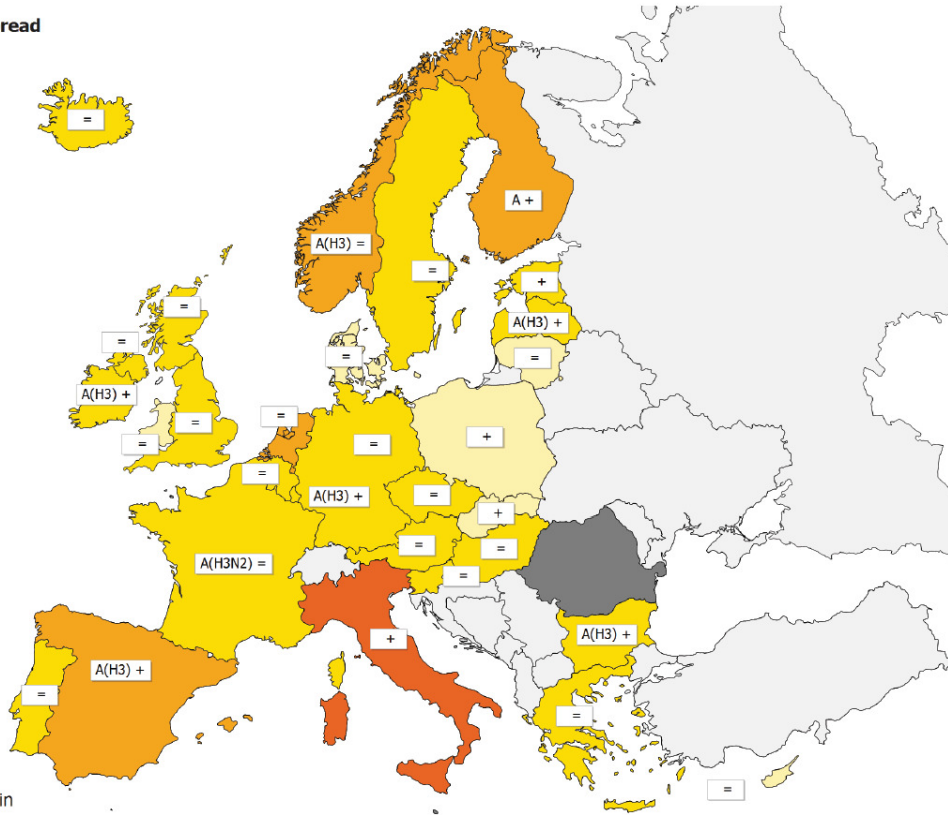
Legend:

No report	Intensity level was not reported	+	Increasing clinical activity
Low	No influenza activity or influenza at baseline levels	-	Decreasing clinical activity
Medium	Usual levels of influenza activity	=	Stable clinical activity
High	Higher than usual levels of influenza activity	A	Type A
Very high	Particularly severe levels of influenza activity	A(H3)	Type A, Subtype H3
		A(H3N2)	Type A, Subtype H3N2

Map 2: Geographic spread for week 02/2012

Geographic spread

- No Report
- No Activity
- Sporadic
- Local
- Regional
- Widespread



- Liechtenstein
- Luxembourg
- Malta

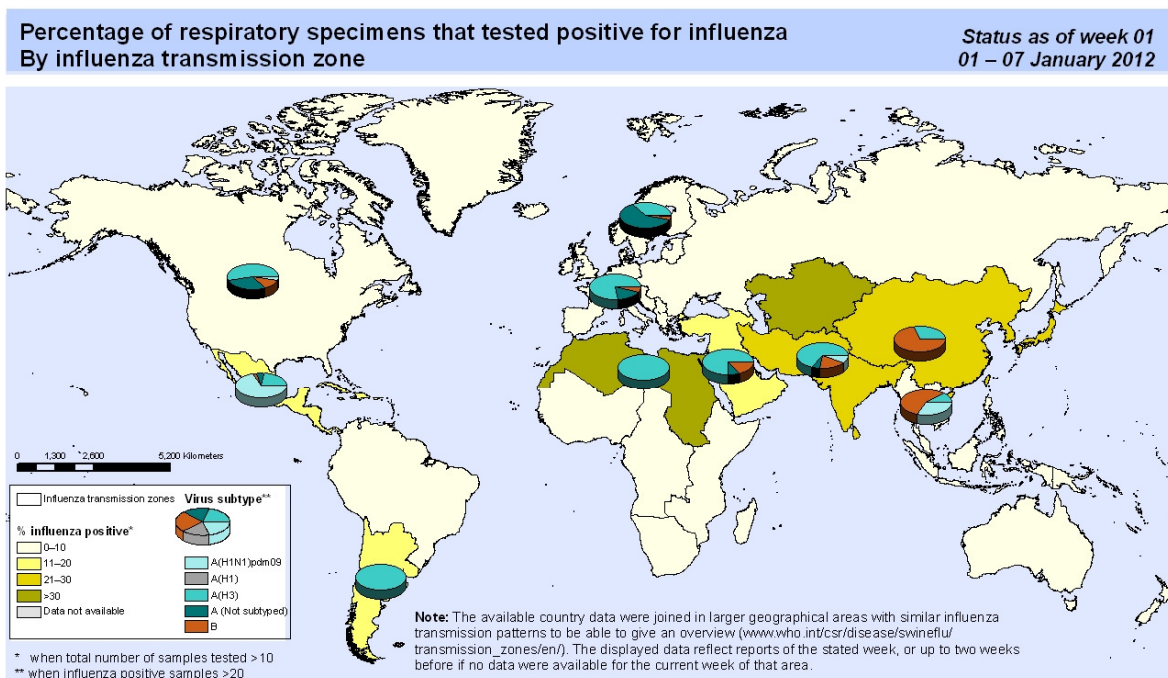
(C) ECDC/Dundas/TESSy

* A type/subtype is reported as dominant when at least ten samples have been detected as influenza positive in the country and of those > 40 % are positive for the type/subtype.

Legend:

No report	Activity level was not reported	+	Increasing clinical activity
No activity	No evidence of influenza virus activity (clinical activity remains at baseline levels)	-	Decreasing clinical activity
Sporadic	Isolated cases of laboratory confirmed influenza infection	=	Stable clinical activity
Local outbreak	Increased influenza activity in local areas (e.g. a city) within a region, or outbreaks in two or more institutions (e.g. schools) within a region (laboratory confirmed)	A	Type A
Regional activity	Influenza activity above baseline levels in one or more regions with a population comprising less than 50% of the country's total population (laboratory confirmed)	A(H3)	Type A, Subtype H3
Widespread	Influenza activity above baseline levels in one or more regions with a population comprising 50% or more of the country's population (laboratory confirmed)	A(H3N2)	Type A, Subtype H3N2

Influensan i Världen (WHO v 1 2012)



The boundaries and names shown and the designations used on this map do not imply the expression of any opinion whatsoever on the part of the World Health Organization concerning the legal status of any country, territory, city or area or of its authorities, or concerning the delimitation of its frontiers or boundaries. Dotted and dashed lines on maps represent approximate border lines for which there may not yet be full agreement.

Data Source: WHO/GIP, data in HQ as of 16 January 2012. Data used are from FluNet (www.who.int/flu-net), 11:58 UTC snapshot, from WHO regional offices and/or ministry of health websites.