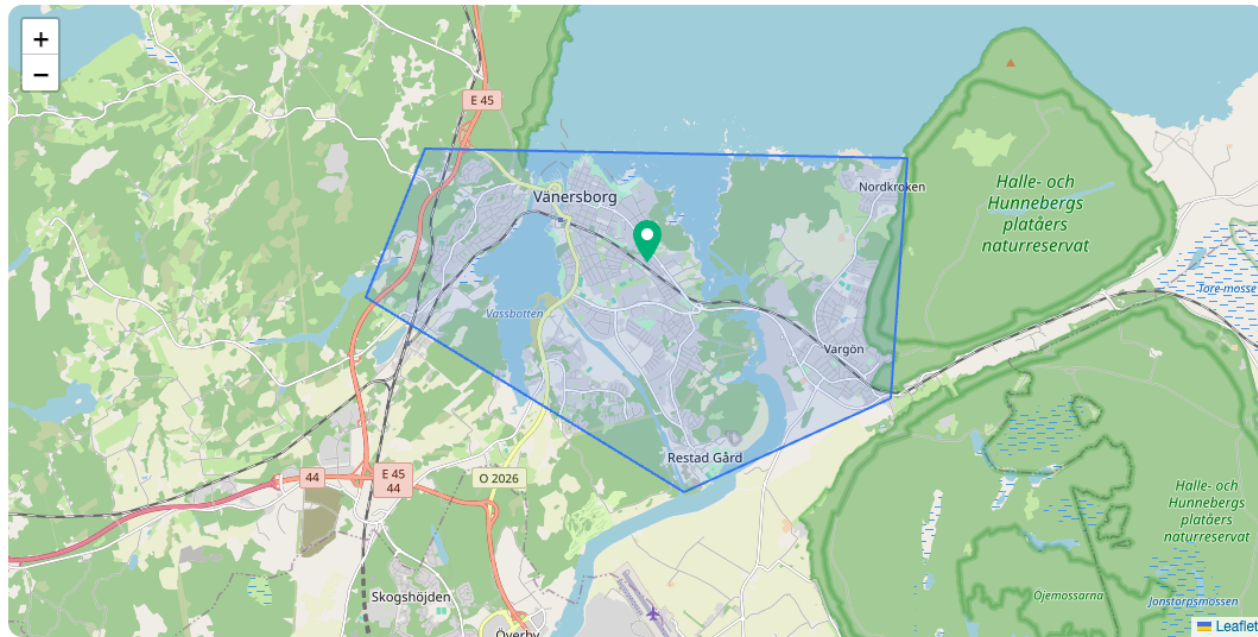


## Location

Map view of skybase location



## Details

Address

Kilgatan 1, 462 32 Vänersborg

Coordinates

58.37110, 12.34353

Opening Hours (GMT+1)

08:00 - 22:00

## Payload Configuration

Liveview Camera Configuration

 **High resolution RGB, IR and Nightvision**

Full spectrum camera with infrared and night vision capabilities

Medkit Configuration

 **Custom Lifepak case**

Case adapted for the Lifepak AED from Stryker

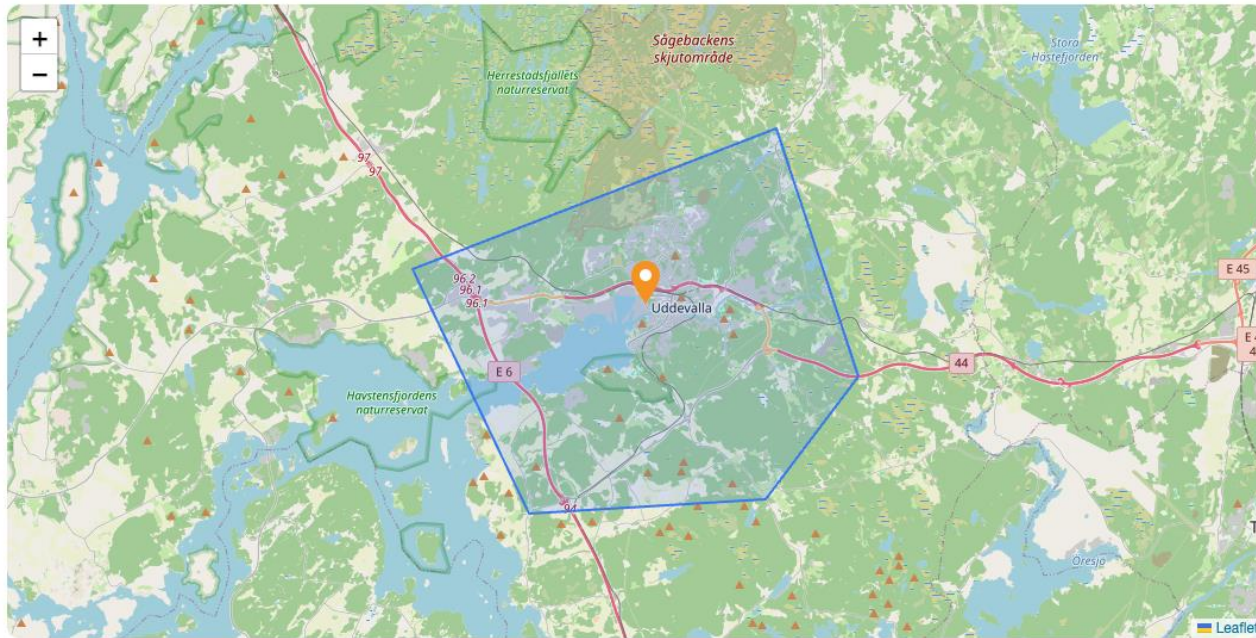
Medkit Content

 **Lifepak CR2 AED**

Automated External Defibrillator for cardiac emergencies

## Location

Map view of skybase location



## Details

Address

**Bastiongatan 34, 451 50 Uddevalla**

Coordinates

**58.35010, 11.91774**

Opening Hours (GMT+1)

**08:00 - 22:00**

## Payload Configuration

Liveview Camera Configuration

 **High resolution RGB, IR and Nightvision**

Full spectrum camera with infrared and night vision capabilities

Medkit Configuration

 **Custom Lifepak case**

Case adapted for the Lifepak AED from Stryker

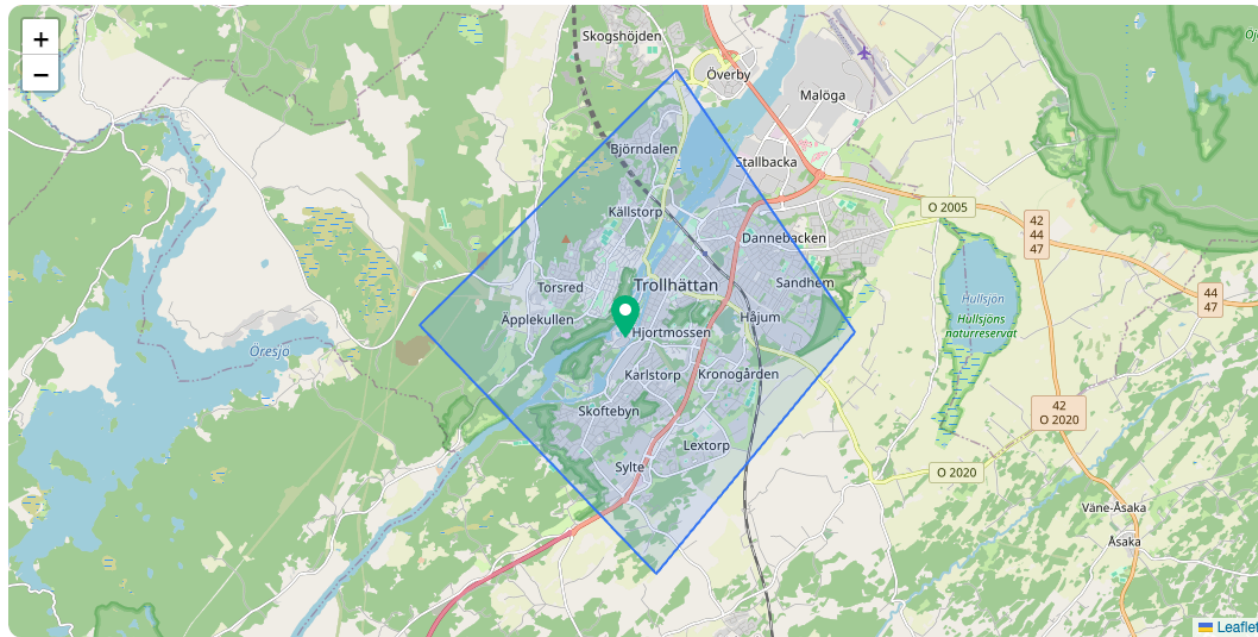
Medkit Content

 **Lifepak CR2 AED**

Automated External Defibrillator for cardiac emergencies

## Location

Map view of skybase location



## Details

Address

Åkersbergsvägen 12, 461 34 Trollhättan

Coordinates

58.27464, 12.27632

Opening Hours (GMT+1)

08:00 - 22:00

## Payload Configuration

Liveview Camera Configuration

-  **High resolution RGB, IR and Nightvision**  
Full spectrum camera with infrared and night vision capabilities

Medkit Configuration

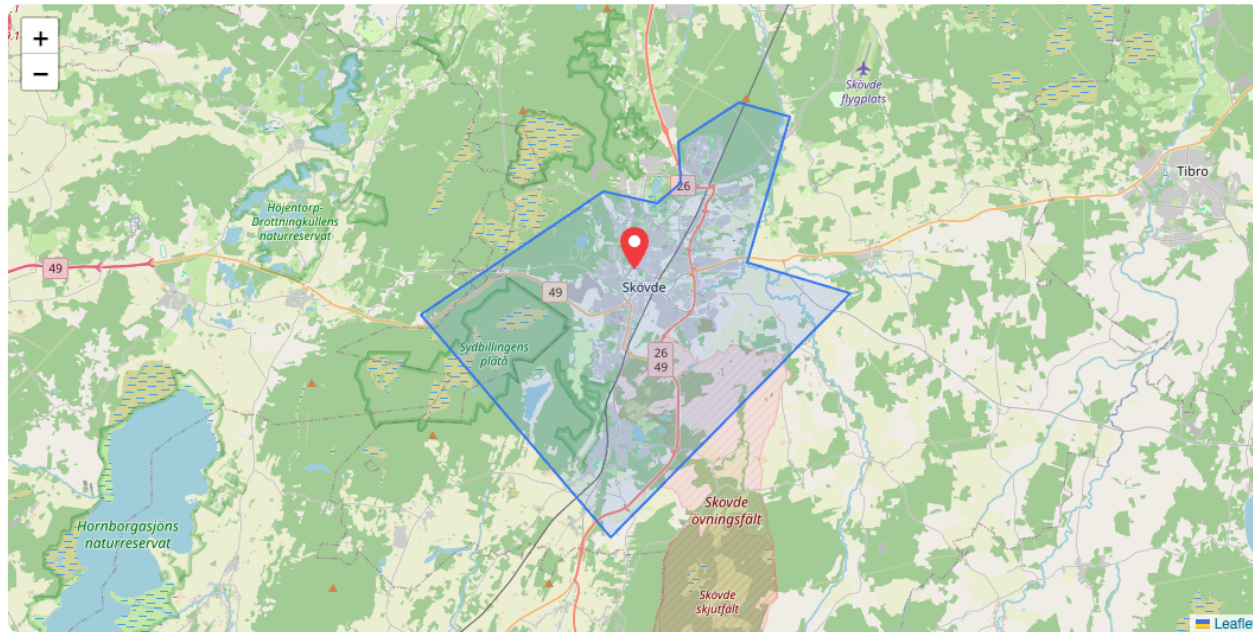
-  **Custom Lifepak case**  
Case adapted for the Lifepak AED from Stryker

Medkit Content

-  **Lifepak CR2 AED**  
Automated External Defibrillator for cardiac emergencies

## Location

Map view of skybase location



## Details

Address

**Majorsgatan 1, 541 30 Skövde**

Coordinates

**58.39496, 13.83982**

Opening Hours (GMT+1)

**08:00 - 22:00**

## Payload Configuration

Liveview Camera Configuration

 **High resolution RGB, IR and Nightvision**

Full spectrum camera with infrared and night vision capabilities

Medkit Content

 **Lifepak CR2 AED**

Automated External Defibrillator for cardiac emergencies

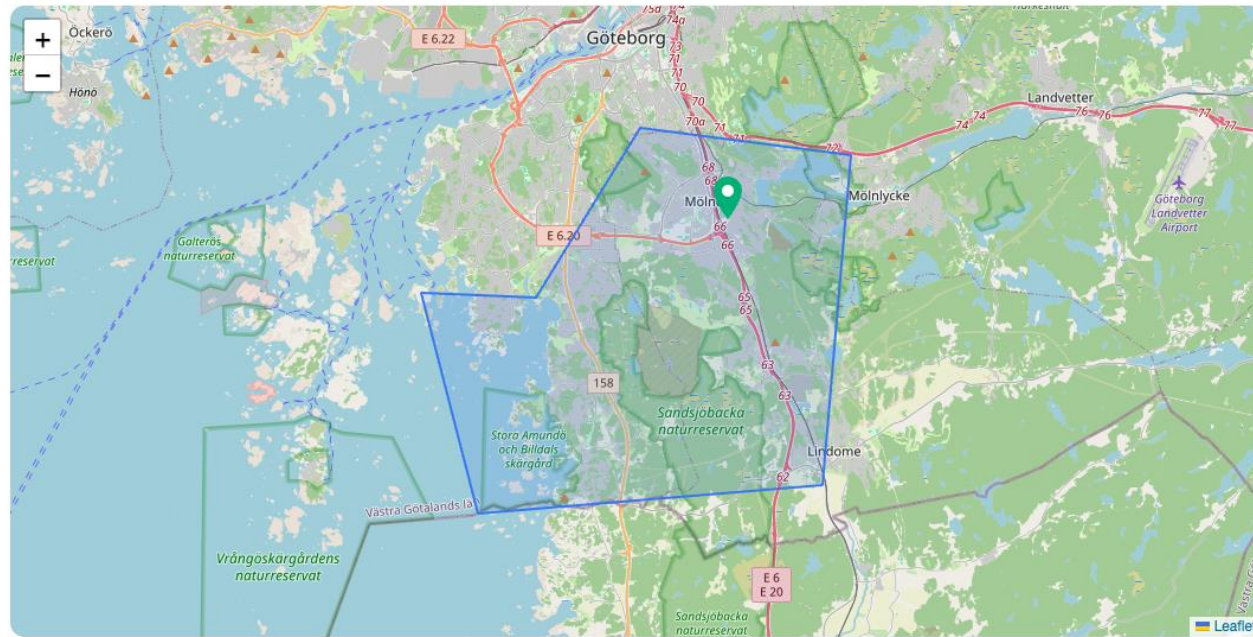
Medkit Configuration

 **Custom Lifepak case**

Case adapted for the Lifepak AED from Stryker

## Location

Map view of skybase location



## Details

Address

**Kronogårdsgatan 3, 431 33 Mölndal**

Coordinates

**57.65076, 12.02600**

Opening Hours (GMT+1)

**08:00 - 22:00**

## Payload Configuration

Liveview Camera Configuration

 **High resolution RGB, IR and Nightvision**


Full spectrum camera with infrared and night vision capabilities

Medkit Configuration

 **Custom Lifepak case**

Case adapted for the Lifepak AED from Stryker

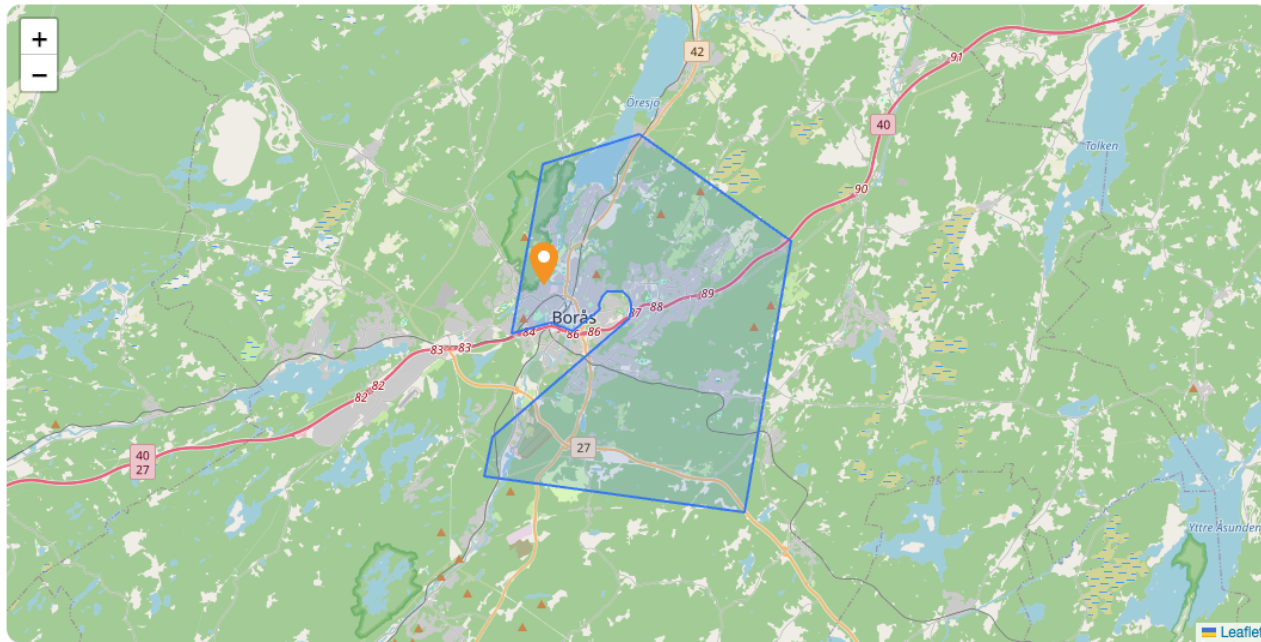
Medkit Content

 **Lifepak CR2 AED**

Automated External Defibrillator for cardiac emergencies

## Location

Map view of skybase location



## Details

Address

**Västerängsgatan, 506 34 Borås**

Coordinates

**57.73071, 12.92339**

Opening Hours (GMT+1)

**08:00 - 22:00**


## Payload Configuration

Liveview Camera Configuration

 **High resolution RGB, IR and Nightvision**

Full spectrum camera with infrared and night vision capabilities

Medkit Configuration

 **Custom Lifepak case**

Case adapted for the Lifepak AED from Stryker

Medkit Content

 **Lifepak CR2 AED**

Automated External Defibrillator for cardiac emergencies